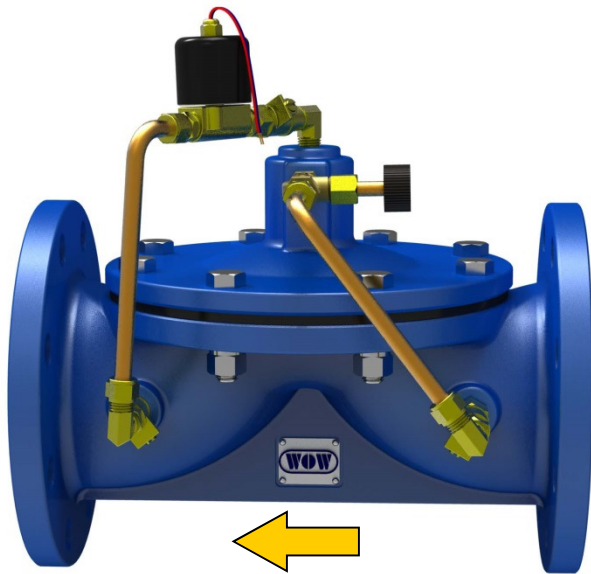




Solenoid Control Valve

Model: 47-06



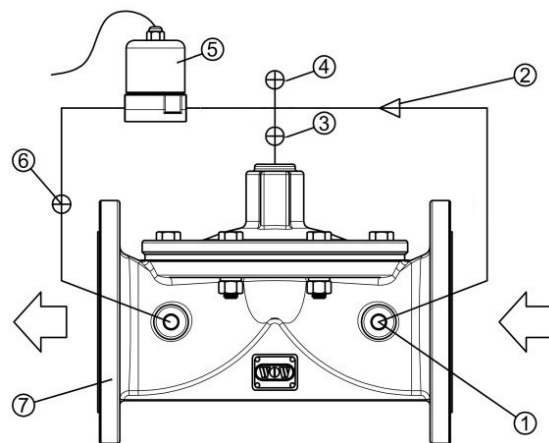
- Sensitive, speedy operation
- Adjustable shutoff speed
- Excellent and reliable sealing performance
- Easy adjustment and maintenance
- ※ This product needs to be installed horizontally, not suitable for inverted and vertical installation

Model 47-06 solenoid control valve is a valve to control open or close. It is composed of a basic valve and a solenoid switch. The powered-on pilot receives the signal to open or close the valve through the liquid inside the control air chamber of the pilot. Close speed control valve, a standard accessory, can control the close speed to avoid water hammer and vibration problems that often happen in solenoid valve.

Accessories

No.	Parts Name
1	Strainer
2	Closing speed control valve
3	Ball valve
4	Ball valve
5	Pilot of solenoid control valve
6	Ball valve
7	Basic valve body

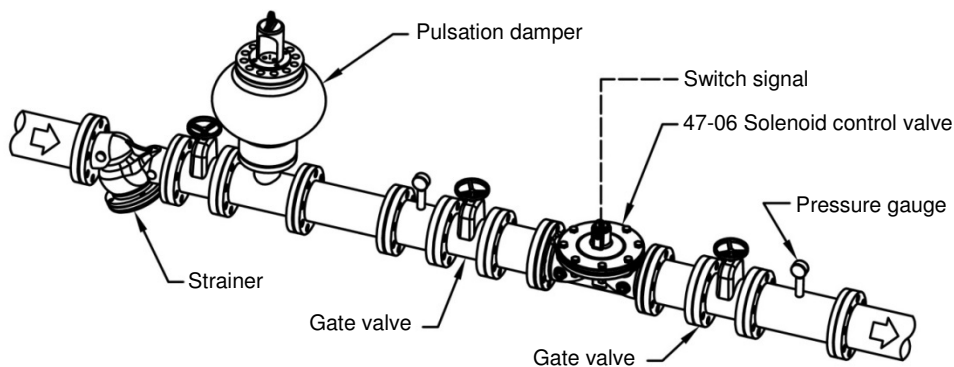
Schematic Diagram



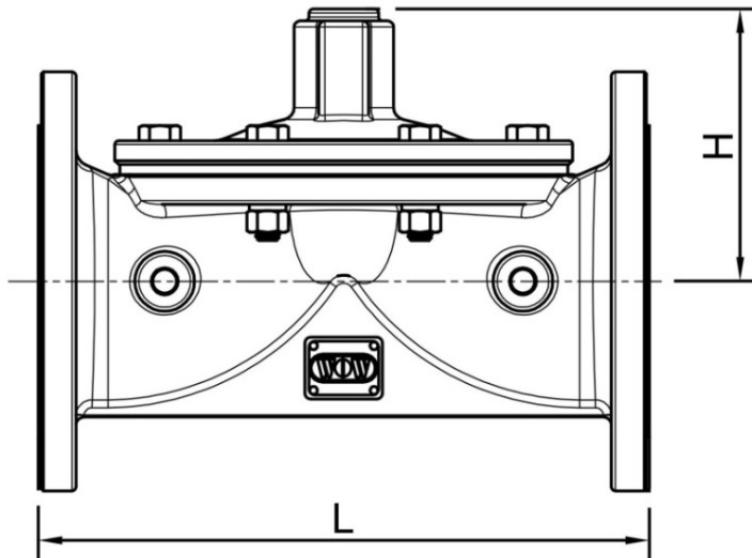
Typical Application

Model 47-06 solenoid control valve is frequently used in industry, such as mix, wash, stir, etc. It can use the direct control signal or a sensor to produce a control signal to control the on/off of the valve.

It can also use a Solenoid Control Valve to control the liquid level. Through the liquid level sensor installed inside the tank, it can produce an on/off signal to control the open/close of the valve to reach the purpose of liquid level control.



Dimension



Valve size	50	65	80	100	125	150	200	250	300
L(mm)	200	220	285	307	370	390	500	605	650
H(mm)	87	109	115	137	142	164	183	244	258
Weight(kg)	7	9	16	18	37	48	83	120	140

Notice :

- ※When installing the valve, strongly request to leave enough space for maintenance. It is necessary to install the filter at the front section of the valve to avoid foreign materials to block the valve and affect the operation of the valve.
- ※King-Tech reserves the right to make any revisions on the valve model and size without prior notification.
- ※When making any design drawing, installation drawing or construction drawing, please do get our approved CAD with our signature, or we will not be responsible for any mistake.

Specification

Size : DN50~DN300 to flange
 Flange : 10K、16K、PN16、150LB
 Temp. range : 0°C~100°C · water
 Working pressure over 0.7 bar
 ※Any size over DN350 or for very low pressure can be made to order.

Material

Body : Iron casting / Stainless steel
 Accessory : Brass / Stainless steel
 Fastener : Carbon steel / Stainless steel
 Diaphragm : NBR / EPDM

Pilot Specification

Voltage Range : AC 110v/220v 50/60 Hz ; DC 12v/24v
 Other specification can be specified when ordering
 Material : Brass/Stainless steel

When Ordering, Please Specify

- | | |
|----------------------|------------------------|
| 1、Valve model number | 4、Connection type |
| 2、Valve size | 5、Other optional parts |
| 3、Pressure range | 6、Working pressure |

King-tech Valve Precision Industry Inc.



www.kingtech-sb.com
 E-mail: sb.wow@msa.hinet.net

1F, No. 47, Lane 127, sect 2, North Xin sheng Road Taipei



Distributor