

- Accurate differential pressure control
- Reliable & excellent sealing
- Reliable fully-liquid pressure control
- Larger flow rate
- Completely automatic operation

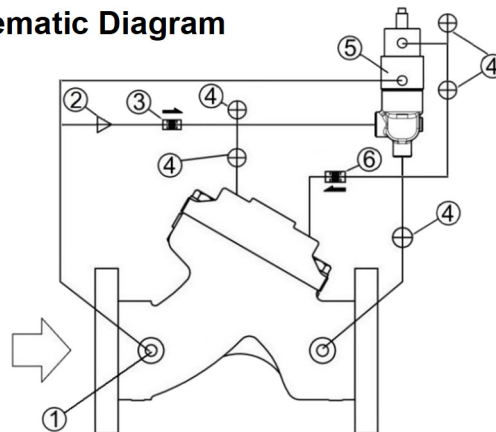
Model 41-09 differential pressure sustaining valve is a fully automatic and liquid-pressure control valve. Using the pressure difference between two pipes controls the pressure difference not to over the acceptable range of the system during valve operation or flow rate variety. The valve will automatically open when pressure difference is increased, and will automatically close when pressure difference is decreased. So that it can maintain the pressure difference between two pipes.

If a check feature is added, and a pressure reversal occurs, the downstream pressure is admitted in the main valve cover chamber closing the valve to prevent return flow.

Accessories

No.	Parts Name
1	Strainer
2	Close Speed Control
3	Check Valve(Optional)
4	Ball Valve
5	Pilot
6	Check Valve(Optional)

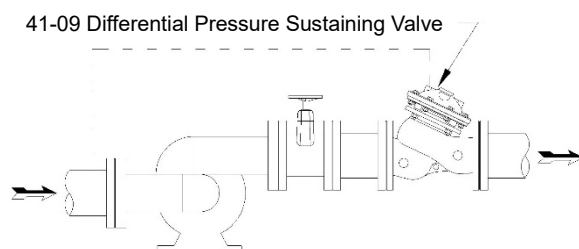
Schematic Diagram



Typical Application

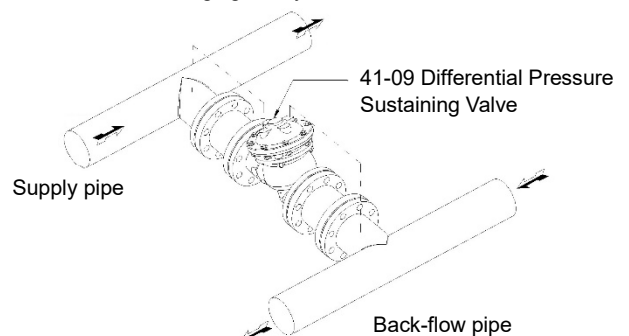
● Protection pump

41-09 differential pressure sustaining valve can maintain the pressure difference of the flow through the pump either the water supply at the upstream or the variety requirement at the downstream. It can steadily maintain and control stable pressure difference at both sides of the pump. So that it can control the flow rate to prevent the damage caused by overload or air etching when the pump is over demanded.

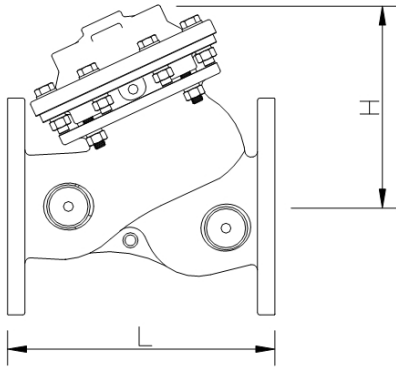


● Bypass

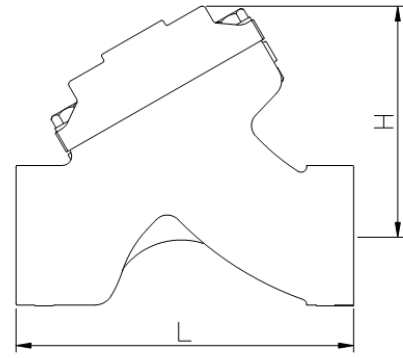
41-09 differential pressure sustaining valve can be used in the circular system to ensure the pressure difference between the supply pipe and the back-flow pipe. In the filter system (bypass), the pressure difference will enlarge when the filter is blocked. By using a model 41-09, the valve will open to compensate the flow rate at the after end to avoid damaging the system.



Dimension



DN50~DN400 Flange



DN50 Thread

Valve size	50 Tr	50	65	80	100	125	150	200	250	300	350	400
L(mm)	184	205	229	250	320	370	415	500	605	725	733	990
H(mm)	123	155	182	186	242	276	308	418	488	572	598	866
Weight(kg)	6	11	13	22	37	46	75	125	217	370	380	846

Notice :

※When installing the valve, strongly request to leave enough space for maintenance. It is necessary to install the filter at the front section of the valve to avoid foreign materials to block the valve and affect the operation of the valve.

※King-Tech reserves the right to make any revisions on the valve model and size without prior notification.

※When making any design drawing, installation drawing or construction drawing, please do get our approved CAD with our signature, or we will not be responsible for any mistake.

Specification

Size : DN50~DN400 to flange

DN50 to Thread

Flange : 10K、16K、PN16、150LB

Temp. range : 0°C~100°C · water

※Any size over DN450 can be made to order.

Material

Body : Ductile Iron / Stainless steel

Accessory : Brass / Stainless steel

Fastener & Spring : Carbon steel / Stainless steel

Diaphragm : NBR / EPDM

Stem : Stainless Steel

Pilot Specification

Adjustable pressure range : 0.1~4 bar、3~9 bar

Temp. range : 0°C~100°C · water

Material : Brass / Stainless steel

When Ordering, Please Specify

1、Valve model number

4、Connection type

2、Valve size

5、Other optional parts

3、Pressure range

6、Working pressure

King-tech Valve Precision Industry Inc.



www.kingtech-sb.com

E-mail: sb.wow@msa.hinet.net

1F, No. 47, Lane 127, sect 2, North Xinsheng Road Taipei



Distributor